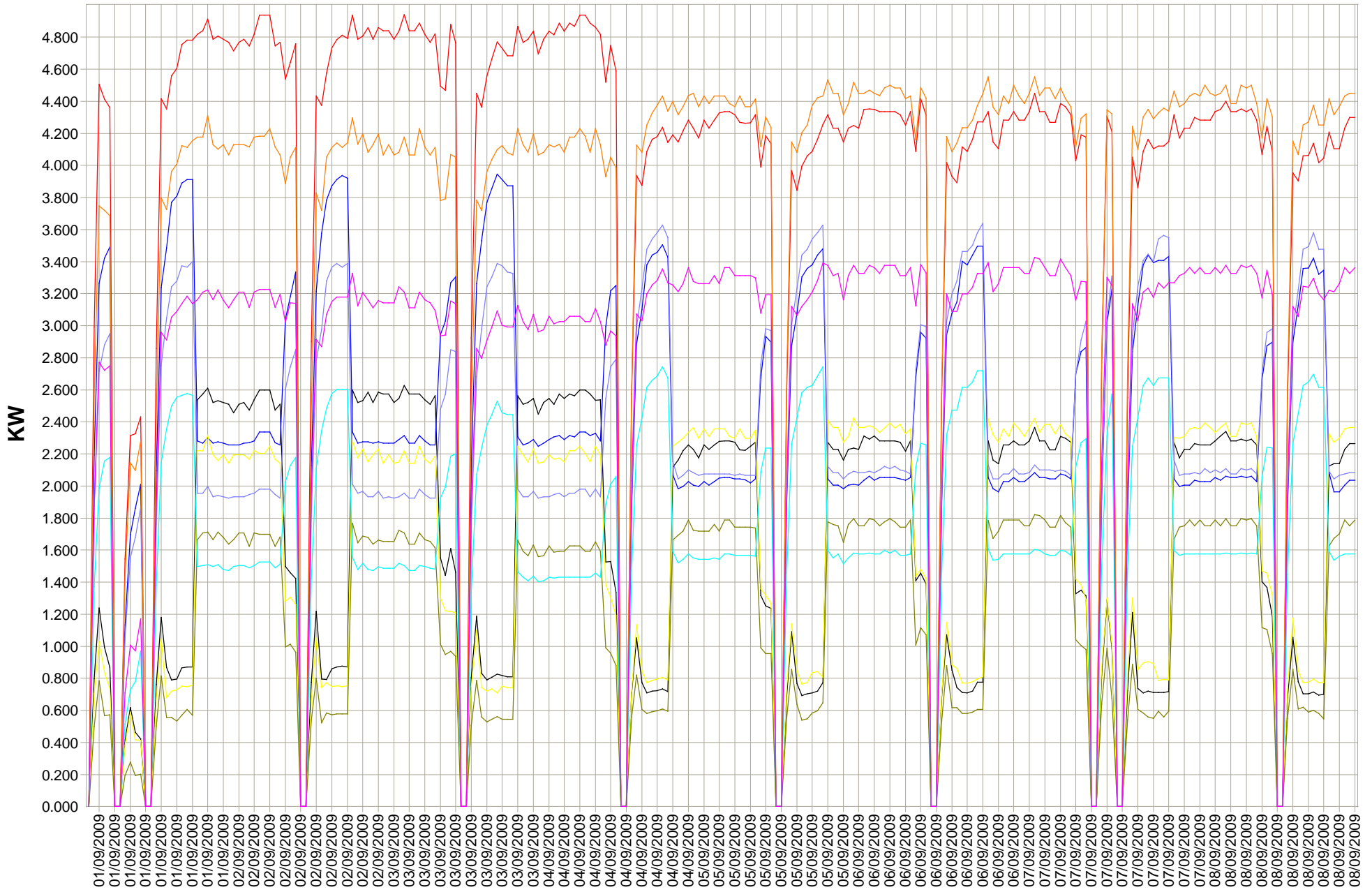
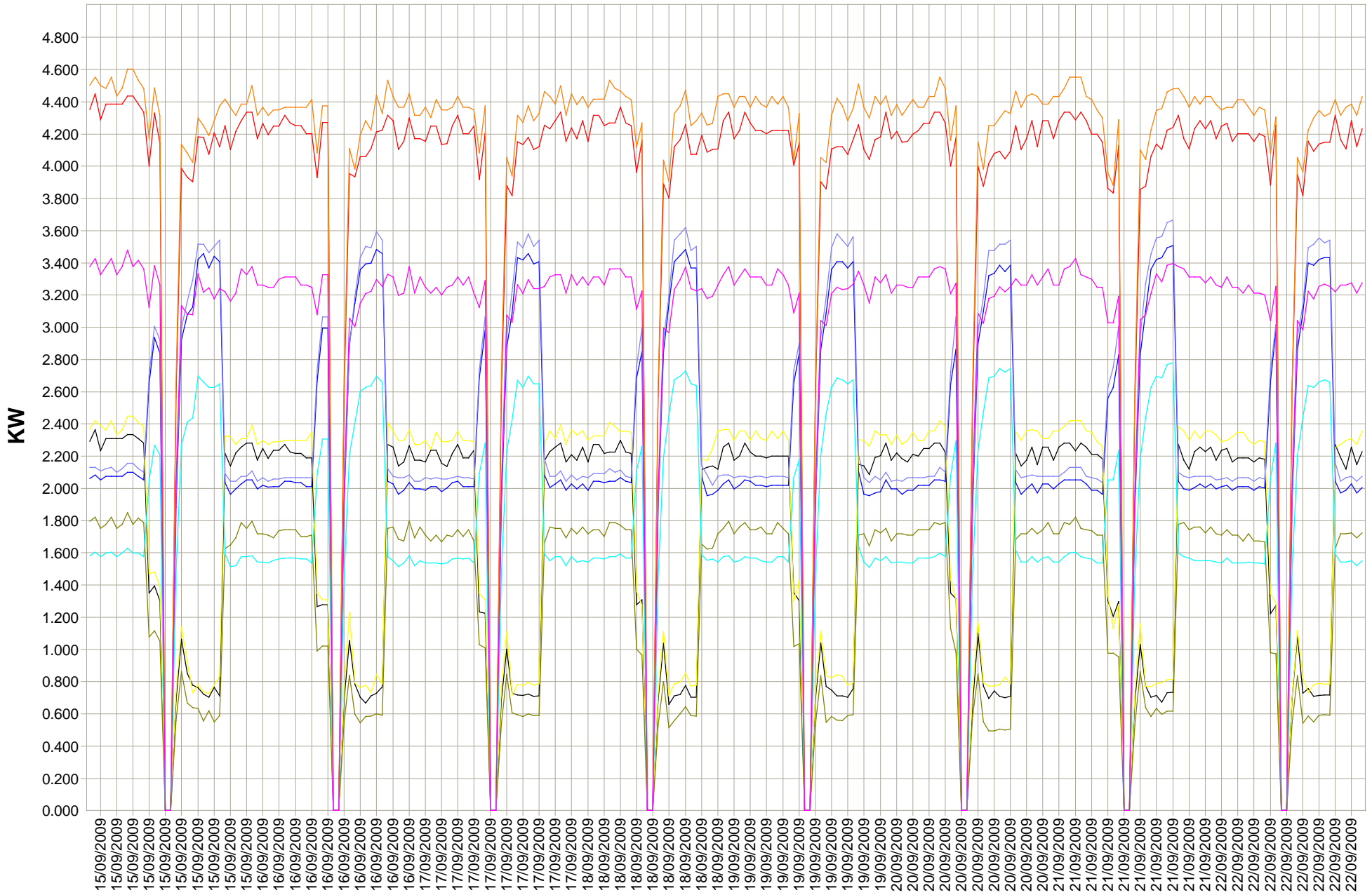


Armoire 5770 Economies Energie R S T 01/09/2009 - 08/09/2009



Armoire 5770 Economies Energie R S T 15/09/2009 - 22/09/2009

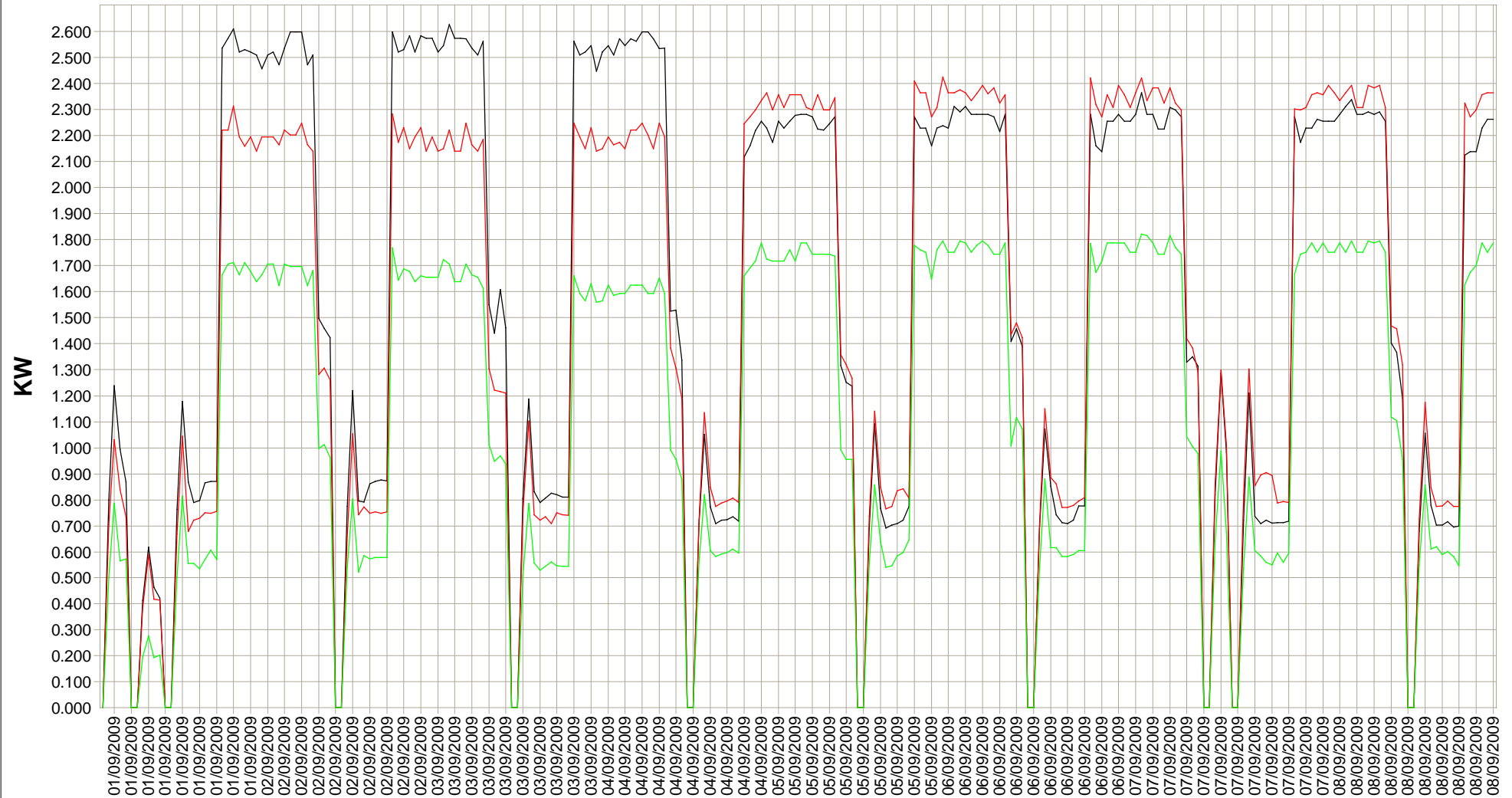


— Economie R

— Economie S

— Economie T

Armoire 5770 Economie R S T 01/09/2009 - 08/09/2009



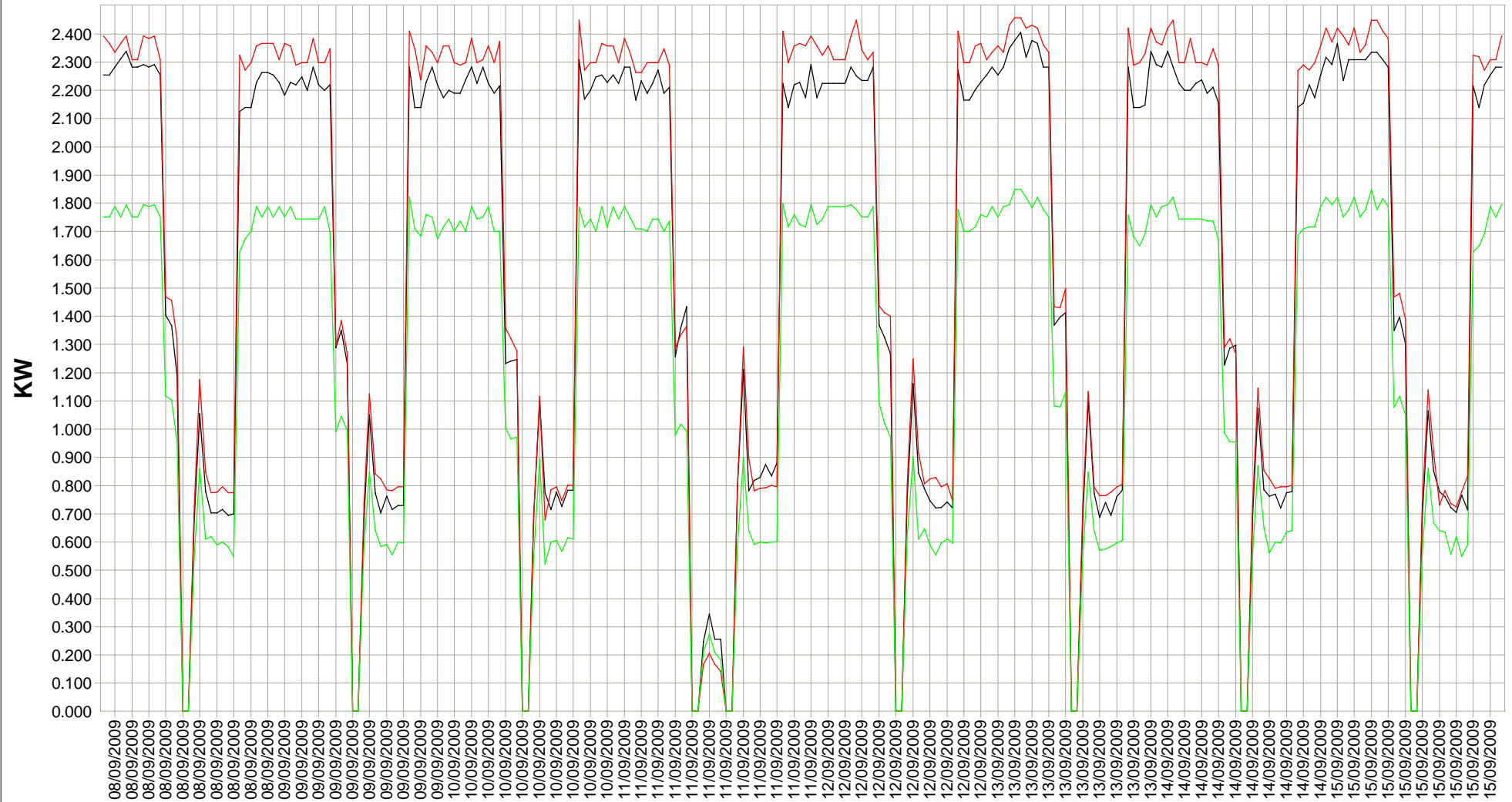
	01/09/2009	01/09/2009	01/09/2009	01/09/2009	01/09/2009	01/09/2009	01/09/2009	01/09/2009	01/09/2009	01/09/2009	01/09/2009	01/09/2009	01/09/2009	01/09/2009	01/09/2009	01/09/2009
Economie R	0.000	0.799	1.239	0.994	0.869	0.000	0.000	0.413	0.618	0.464	0.421	0.000	0.000	0.763	1.179	0.868
Economie S	0.000	0.705	1.031	0.838	0.735	0.000	0.000	0.383	0.590	0.418	0.415	0.000	0.000	0.669	1.044	0.678
Economie T	0.000	0.500	0.785	0.566	0.572	0.000	0.000	0.195	0.277	0.194	0.203	0.000	0.000	0.503	0.814	0.555

— Economie R

— Economie S

— Economie T

Armoire 5770 Economie R S T 08/09/2009 - 15/09/2009



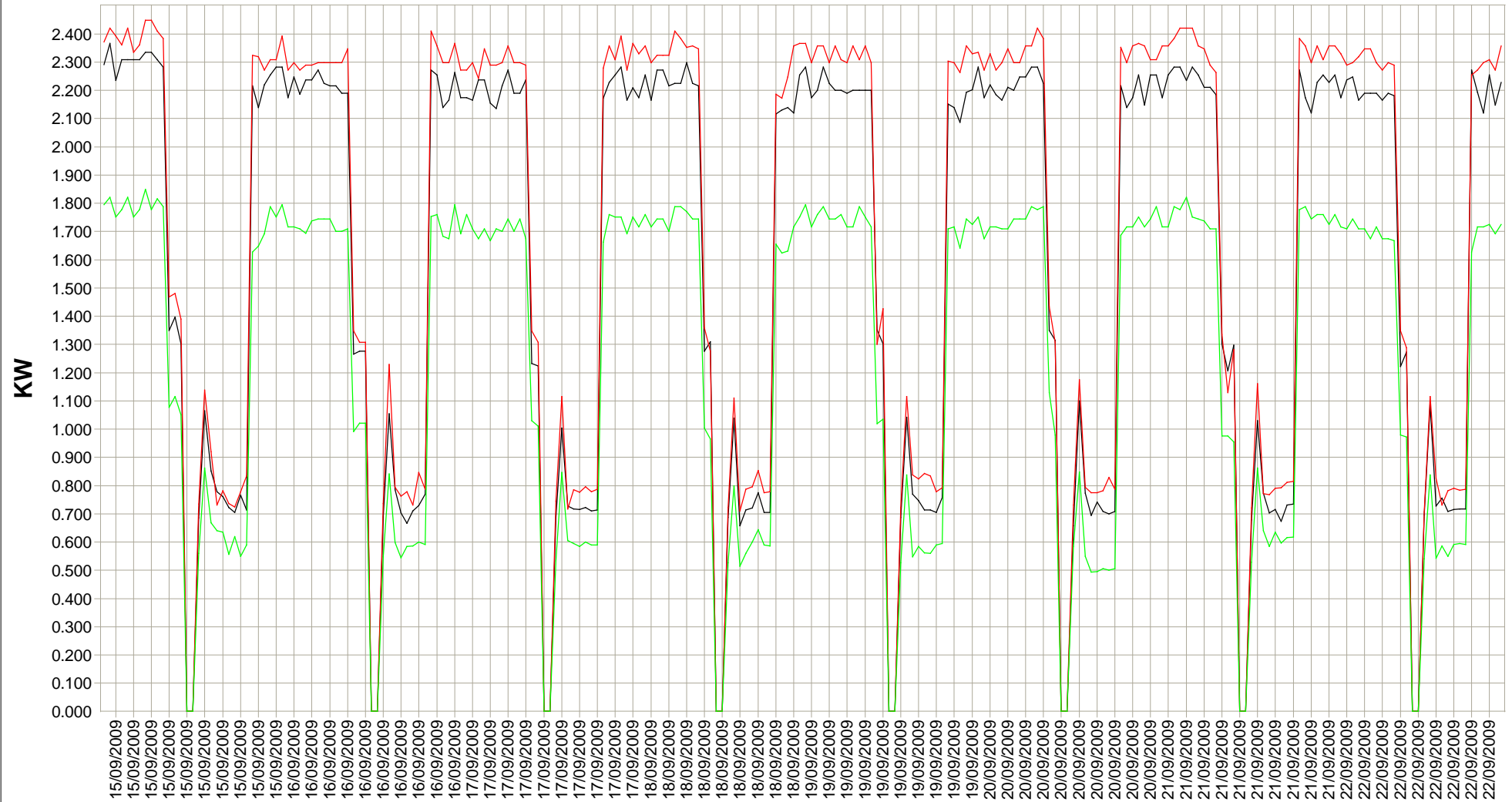
	08/09/2009	08/09/2009	08/09/2009	08/09/2009	08/09/2009	08/09/2009	08/09/2009	08/09/2009	08/09/2009	08/09/2009	08/09/2009	08/09/2009	08/09/2009	08/09/2009	08/09/2009	08/09/2009
Economie R	2.255	2.255	2.282	2.312	2.339	2.282	2.282	2.291	2.282	2.291	2.255	1.403	1.367	1.190	0.000	0.000
Economie S	2.393	2.366	2.335	2.366	2.393	2.309	2.309	2.393	2.384	2.393	2.309	1.469	1.457	1.320	0.000	0.000
Economie T	1.752	1.752	1.788	1.752	1.795	1.752	1.752	1.795	1.788	1.795	1.752	1.117	1.104	0.955	0.000	0.000

— Economie R

— Economie S

— Economie T

Armoire 5770 Economie R S T 15/09/2009 - 22/09/2009



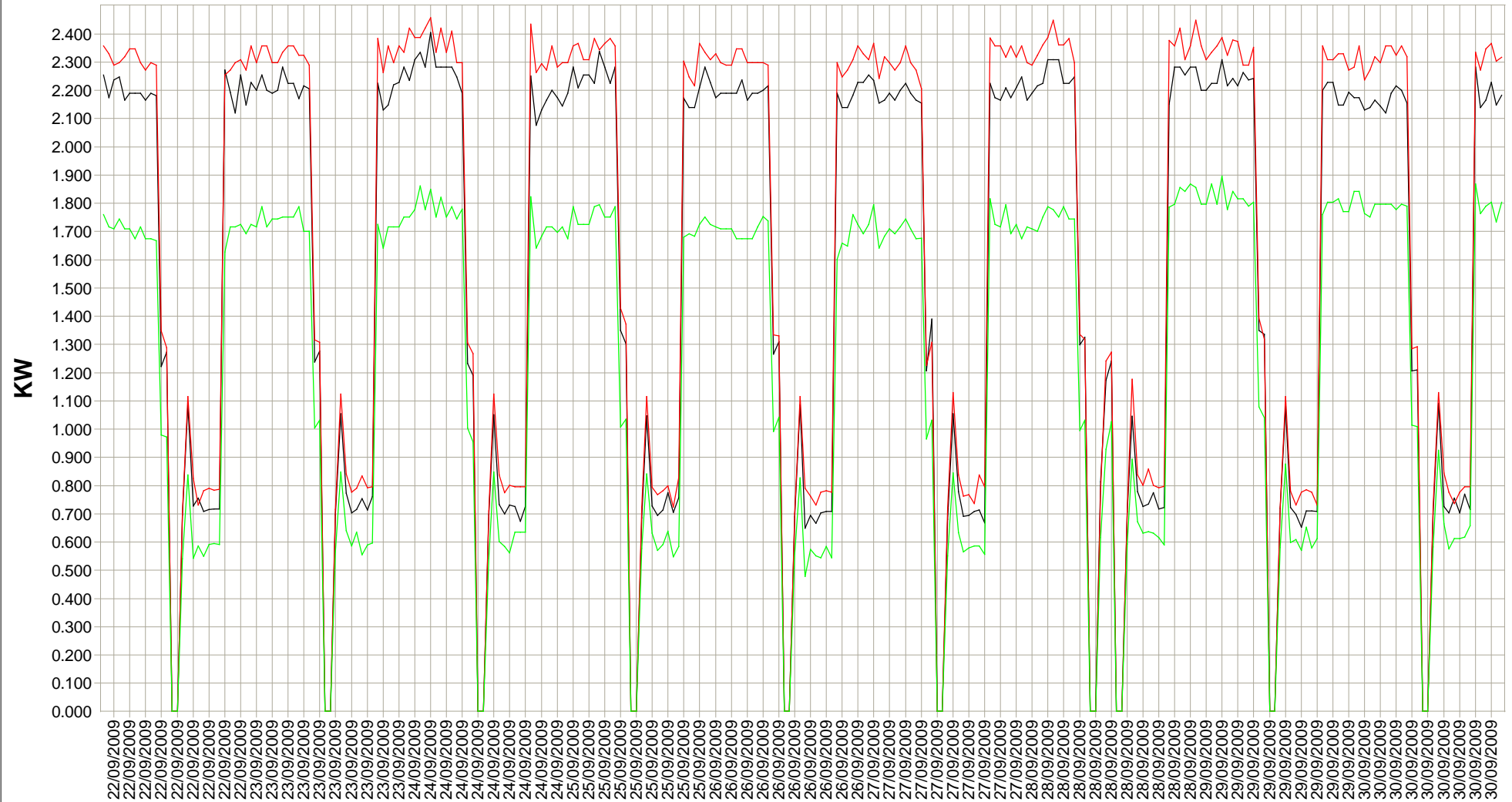
	15/09/2009	15/09/2009	15/09/2009	15/09/2009	15/09/2009	15/09/2009	15/09/2009	15/09/2009	15/09/2009	15/09/2009	15/09/2009	15/09/2009	15/09/2009	15/09/2009	15/09/2009
Economie R	2.291	2.366	2.235	2.309	2.309	2.309	2.309	2.335	2.335	2.309	2.282	1.350	1.396	1.303	0.000
Economie S	2.371	2.421	2.393	2.361	2.421	2.335	2.361	2.448	2.448	2.410	2.384	1.469	1.480	1.390	0.000
Economie T	1.795	1.822	1.752	1.778	1.822	1.752	1.778	1.850	1.778	1.816	1.788	1.077	1.116	1.051	0.000

— Economie R

— Economie S

— Economie T

Armoire 5770 Economie R S T 22/09/2009 - 30/09/2009



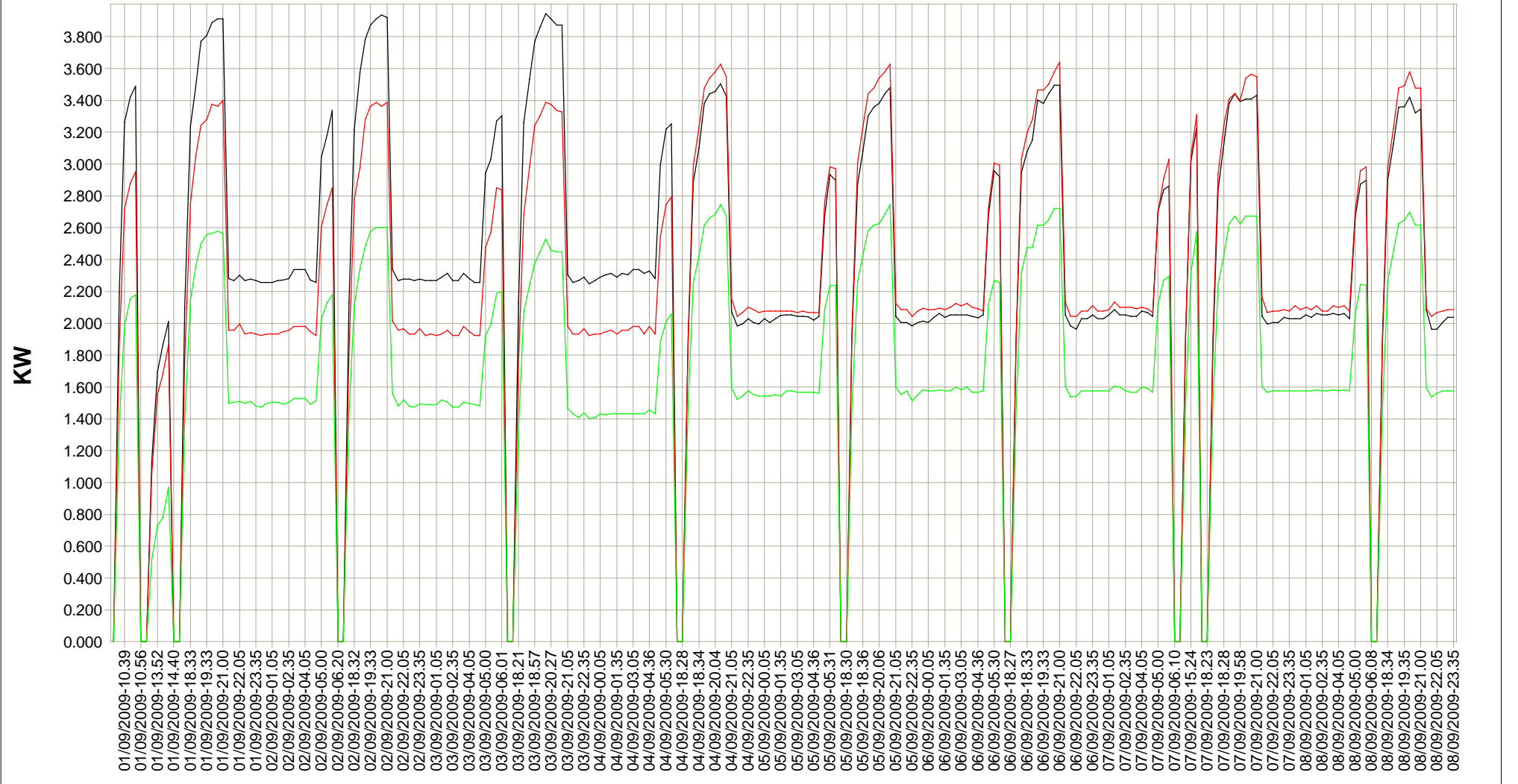
	22/09/2009	22/09/2009	22/09/2009	22/09/2009	22/09/2009	22/09/2009	22/09/2009	22/09/2009	22/09/2009	22/09/2009	22/09/2009	22/09/2009	22/09/2009	22/09/2009	22/09/2009	22/09/2009
Economie R	2.255	2.174	2.237	2.247	2.165	2.190	2.190	2.190	2.165	2.190	2.181	1.222	1.272	0.000	0.000	0.696
Economie S	2.357	2.330	2.290	2.299	2.320	2.347	2.347	2.299	2.272	2.299	2.290	1.347	1.288	0.000	0.000	0.707
Economie T	1.761	1.717	1.710	1.744	1.710	1.710	1.675	1.717	1.675	1.675	1.668	0.980	0.973	0.000	0.000	0.541

— Puissance R

— Puissance S

— Puissance T

Armoire 5770 Puissance R S T 01/09/2009 - 08/09/2009



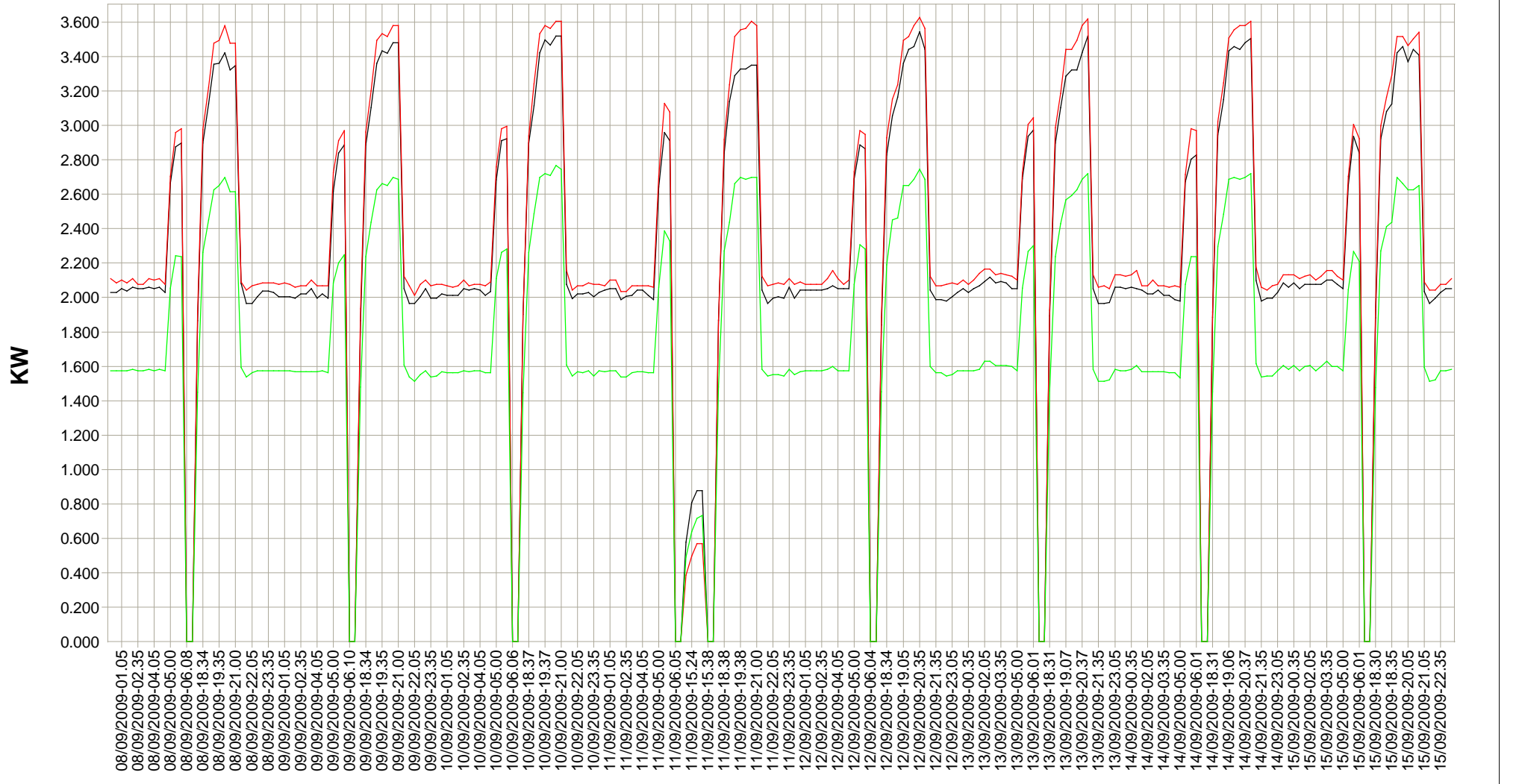
	01/09/2009-10.34	01/09/2009-10.34	01/09/2009-10.39	01/09/2009-10.39	01/09/2009-10.40	01/09/2009-10.56	01/09/2009-13.47	01/09/2009-13.47	01/09/2009-13.52	01/09/2009-13.53	01/09/2009-14.2
Puissance R	0.000	2.193	3.265	3.420	3.490	0.000	0.000	1.133	1.696	1.861	2.01
Puissance S	0.000	1.857	2.717	2.881	2.951	0.000	0.000	1.052	1.555	1.679	1.86
Puissance T	0.000	1.374	1.988	2.155	2.177	0.000	0.000	0.513	0.730	0.778	0.97

— Puissance R

— Puissance S

— Puissance T

Armoire 5770 Puissance R S T 08/09/2009 - 15/09/2009



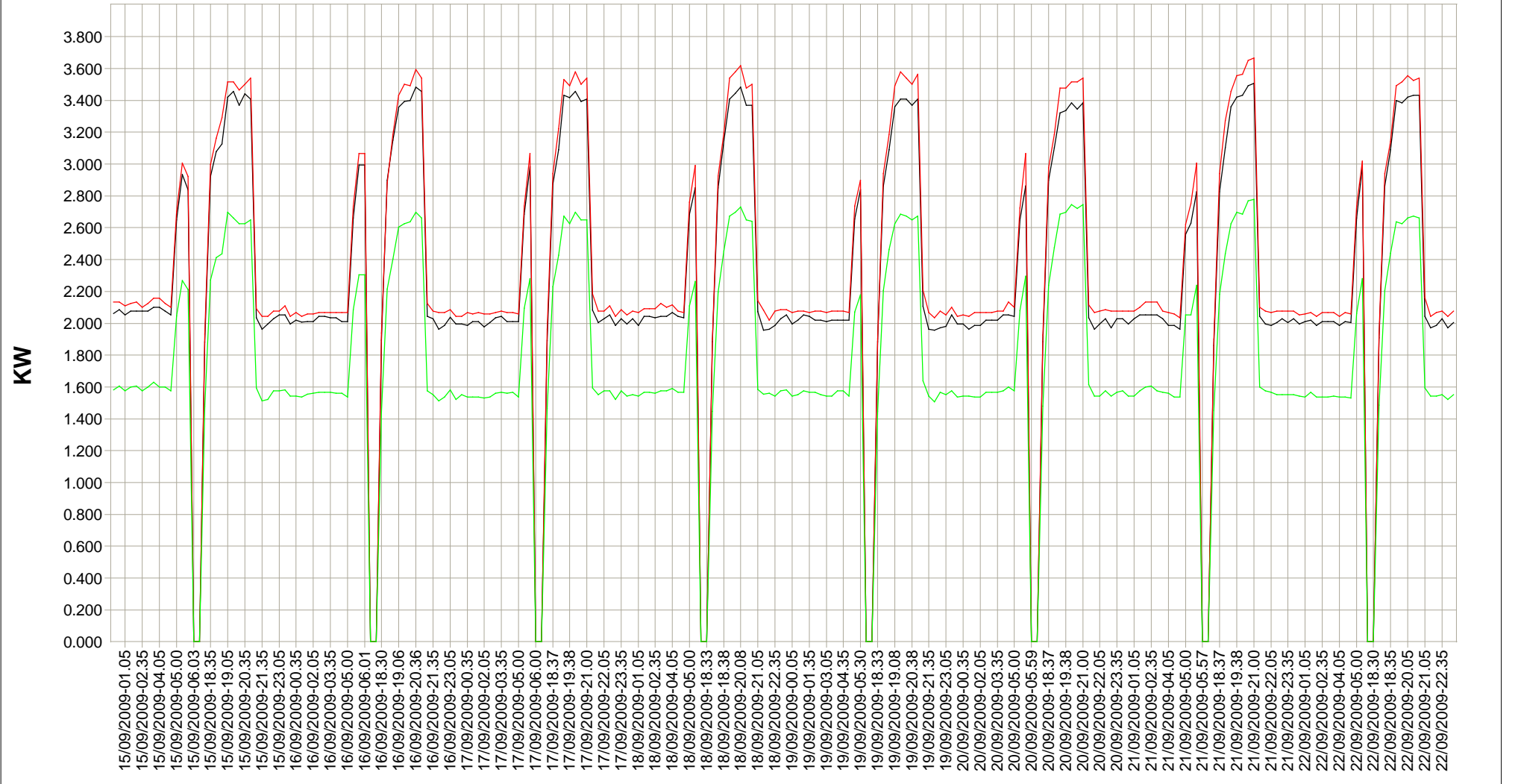
	08/09/2009-00.05	08/09/2009-00.35	08/09/2009-01.05	08/09/2009-01.35	08/09/2009-02.05	08/09/2009-02.35	08/09/2009-03.05	08/09/2009-03.35	08/09/2009-04.05	08/09/2009-04.36	08/09/2009-05.0
Puissance R	2.028	2.028	2.052	2.036	2.060	2.052	2.052	2.060	2.052	2.060	2.02
Puissance S	2.108	2.084	2.100	2.084	2.108	2.076	2.076	2.108	2.100	2.108	2.07
Puissance T	1.575	1.575	1.575	1.575	1.581	1.575	1.575	1.581	1.575	1.581	1.57

— Puissance R

— Puissance S

— Puissance T

Armoire 5770 Puissance R S T 15/09/2009 - 22/09/2009



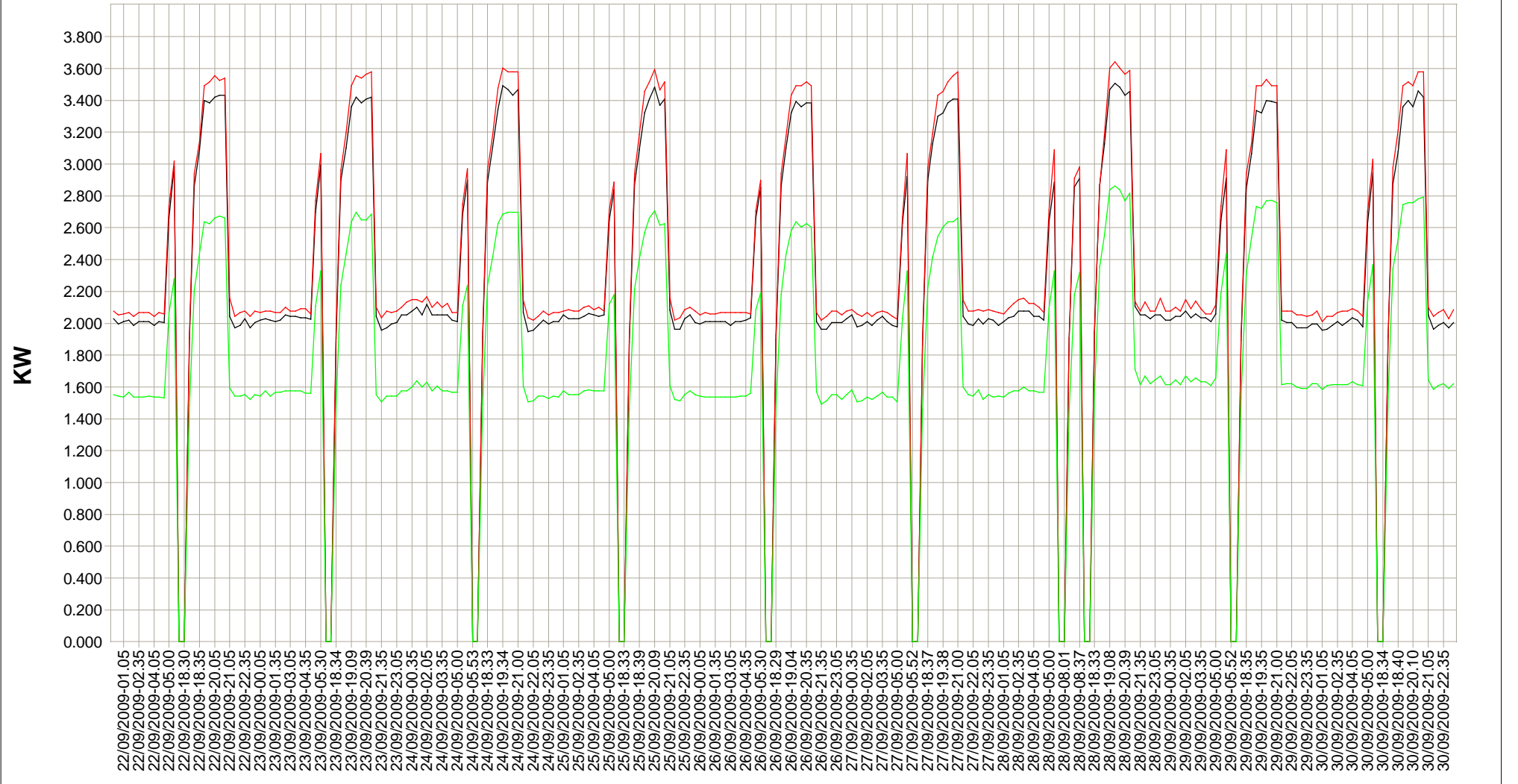
	15/09/2009-00.05	15/09/2009-00.35	15/09/2009-01.05	15/09/2009-01.35	15/09/2009-02.05	15/09/2009-02.35	15/09/2009-03.05	15/09/2009-03.35	15/09/2009-04.05	15/09/2009-04.36	15/09/2009-05.0
Puissance R	2.060	2.084	2.052	2.076	2.076	2.076	2.076	2.100	2.100	2.076	2.05
Puissance S	2.132	2.132	2.108	2.123	2.132	2.100	2.123	2.156	2.156	2.123	2.10
Puissance T	1.581	1.605	1.575	1.599	1.605	1.575	1.599	1.629	1.599	1.599	1.57

— Puissance R

— Puissance S

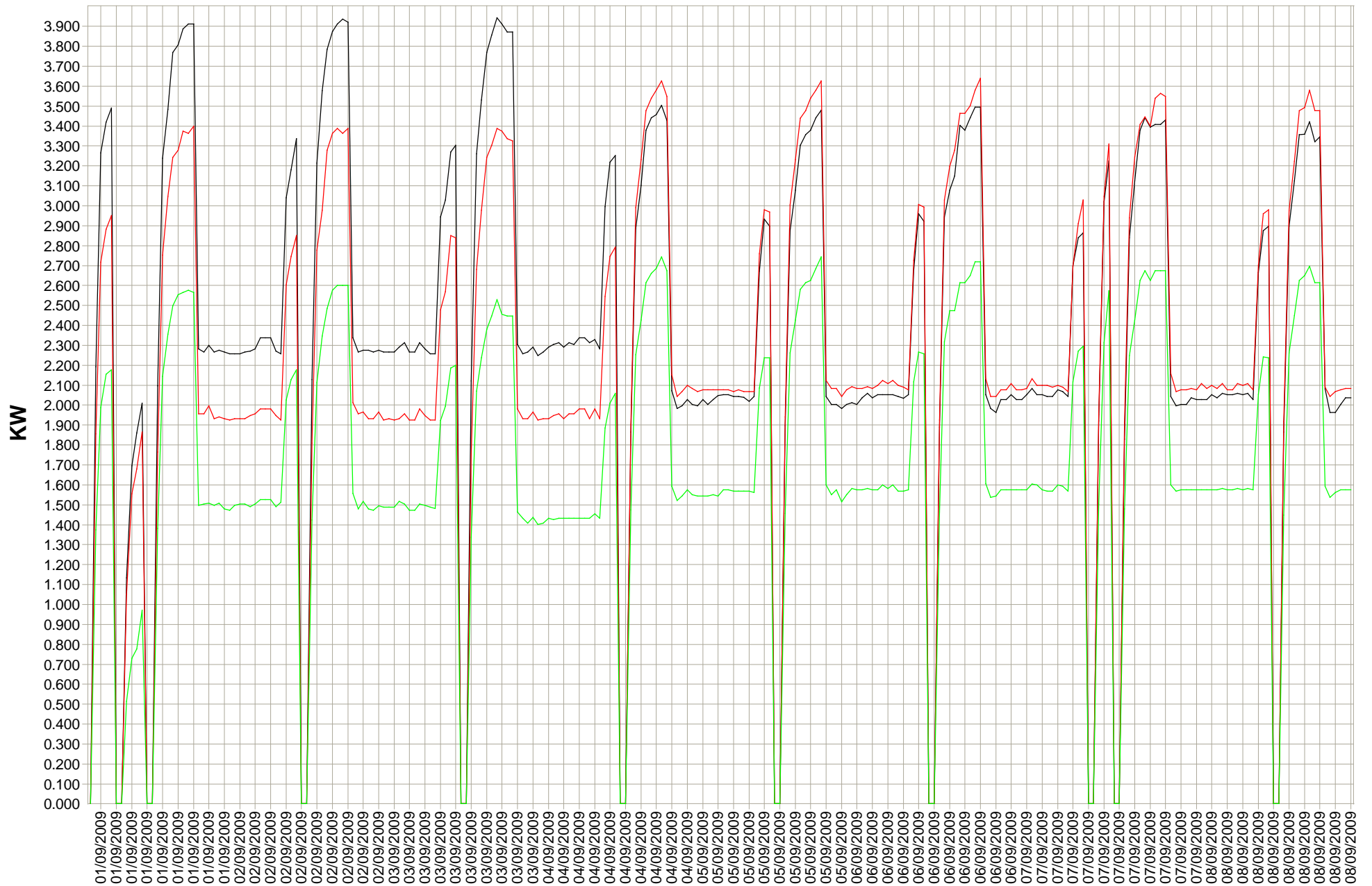
— Puissance T

Armoire 5770 Puissance R S T 22/09/2009 - 30/09/2009

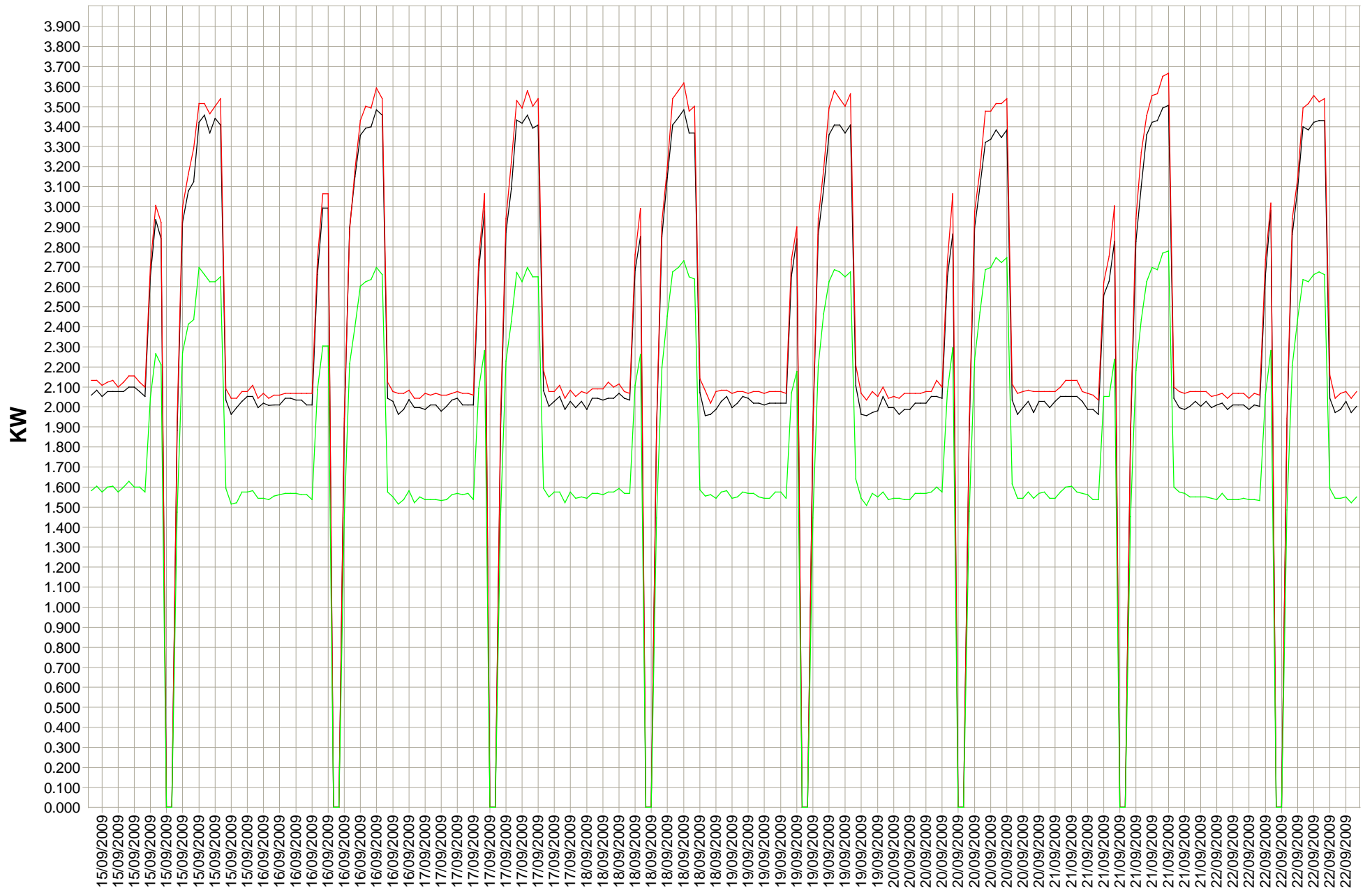


	22/09/2009-00.05	22/09/2009-00.35	22/09/2009-01.05	22/09/2009-01.35	22/09/2009-02.05	22/09/2009-02.35	22/09/2009-03.05	22/09/2009-03.35	22/09/2009-04.05	22/09/2009-04.35	22/09/2009-05.00	
Puissance R	2.028	1.996	2.011	2.020	1.988	2.011	2.011	2.011	2.011	1.988	2.011	2.00
Puissance S	2.076	2.052	2.059	2.067	2.043	2.067	2.067	2.067	2.067	2.043	2.067	2.05
Puissance T	1.551	1.544	1.538	1.568	1.538	1.538	1.538	1.538	1.544	1.538	1.538	1.53

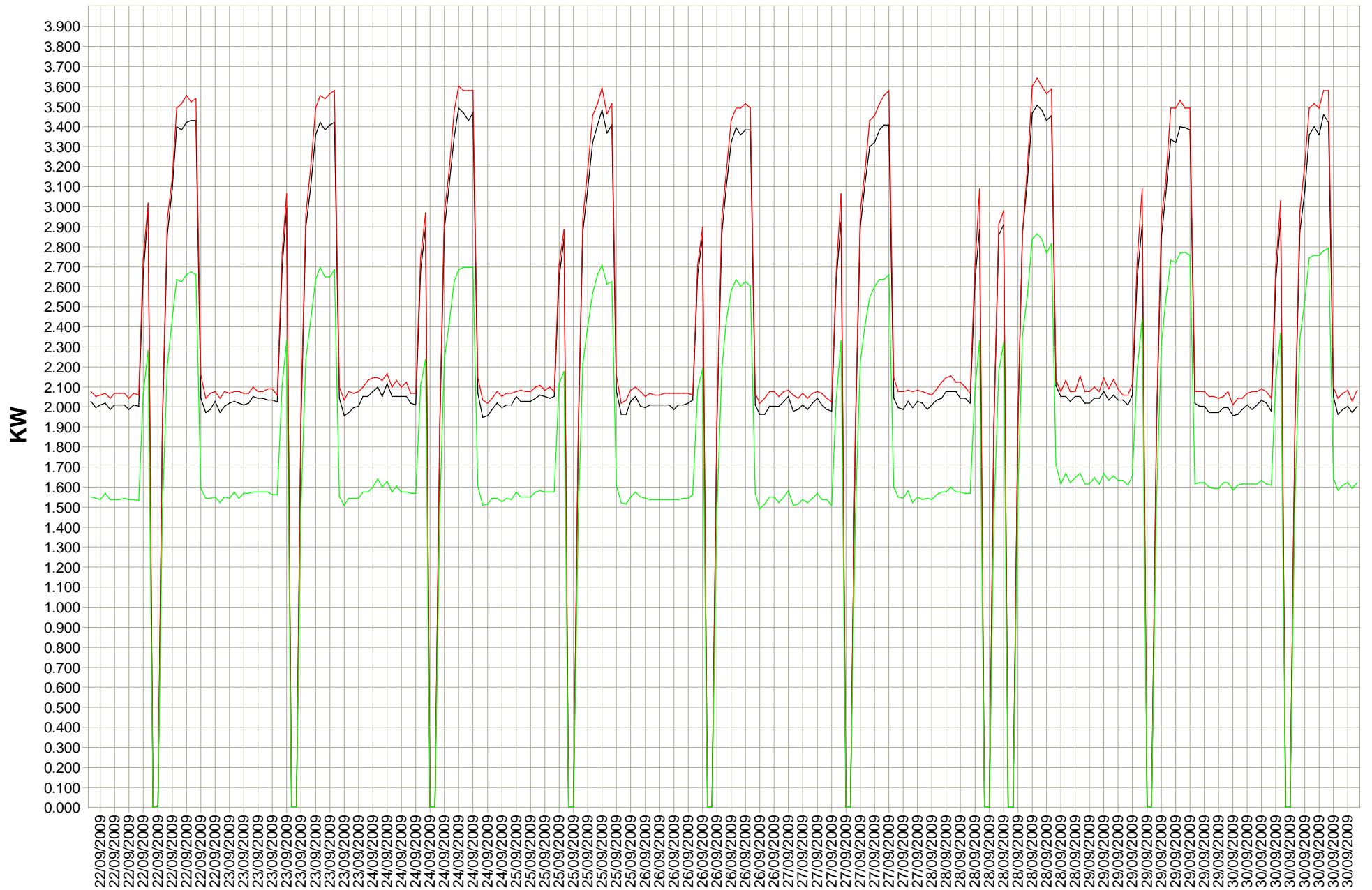
Armoire 5770 Puissance Réelle R S T 01/09/2009 - 08/09/2009



Armoire 5770 Puissance Réelle R S T 15/09/2009 - 22/09/2009



Armoire 5770 Puissance Réelle R S T 22/09/2009 - 30/09/2009

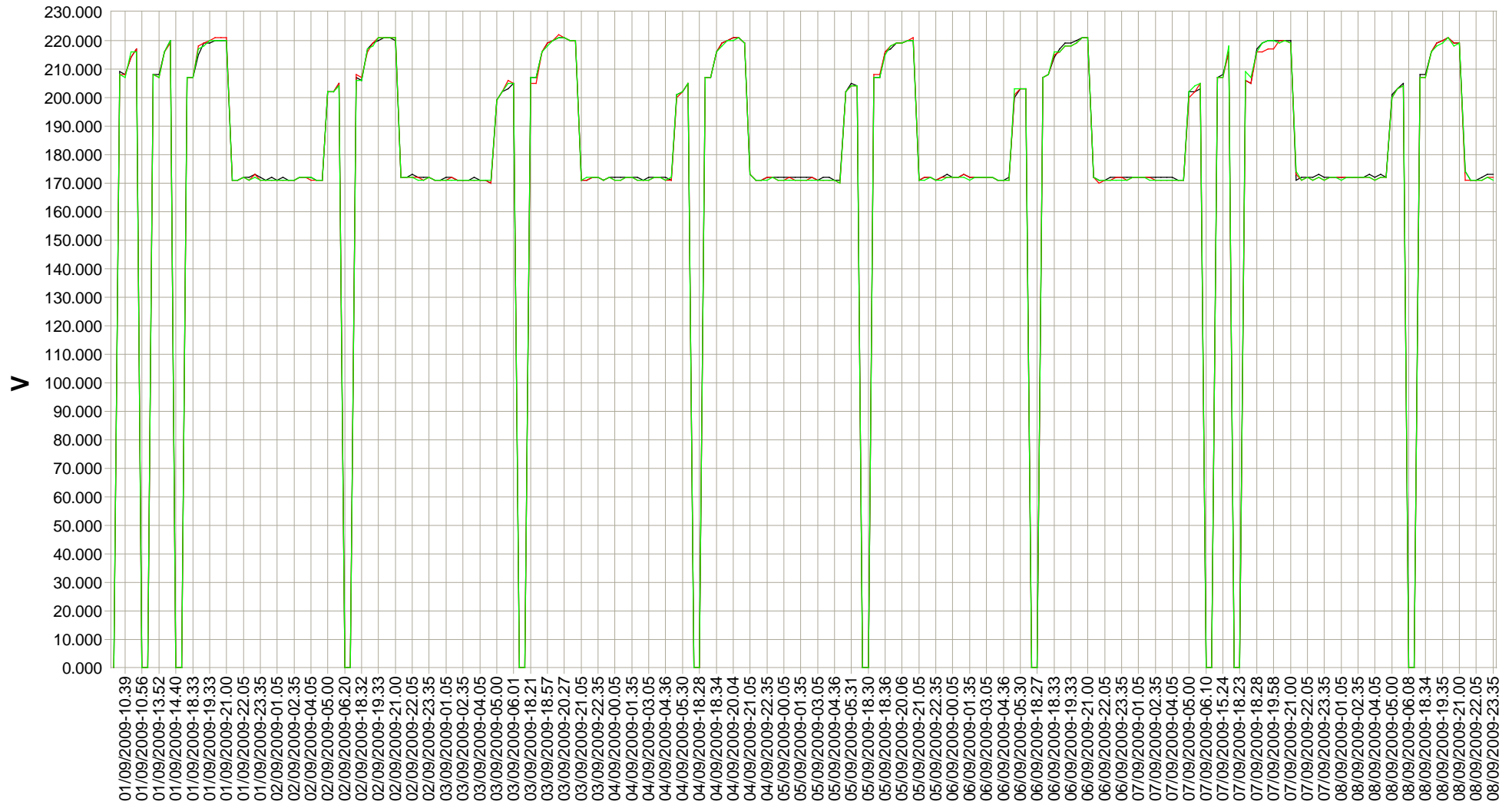


— Tension Aval R

— Tension Aval S

— Tension Aval T

Armoire 5770 Tension Aval R S T 01/09/2009 - 08/09/2009



01/09/2009-10.34 01/09/2009-10.34 01/09/2009-10.39 01/09/2009-10.39 01/09/2009-10.40 01/09/2009-10.56 01/09/2009-13.47 01/09/2009-13.47 01/09/2009-13.52 01/09/2009-13.53

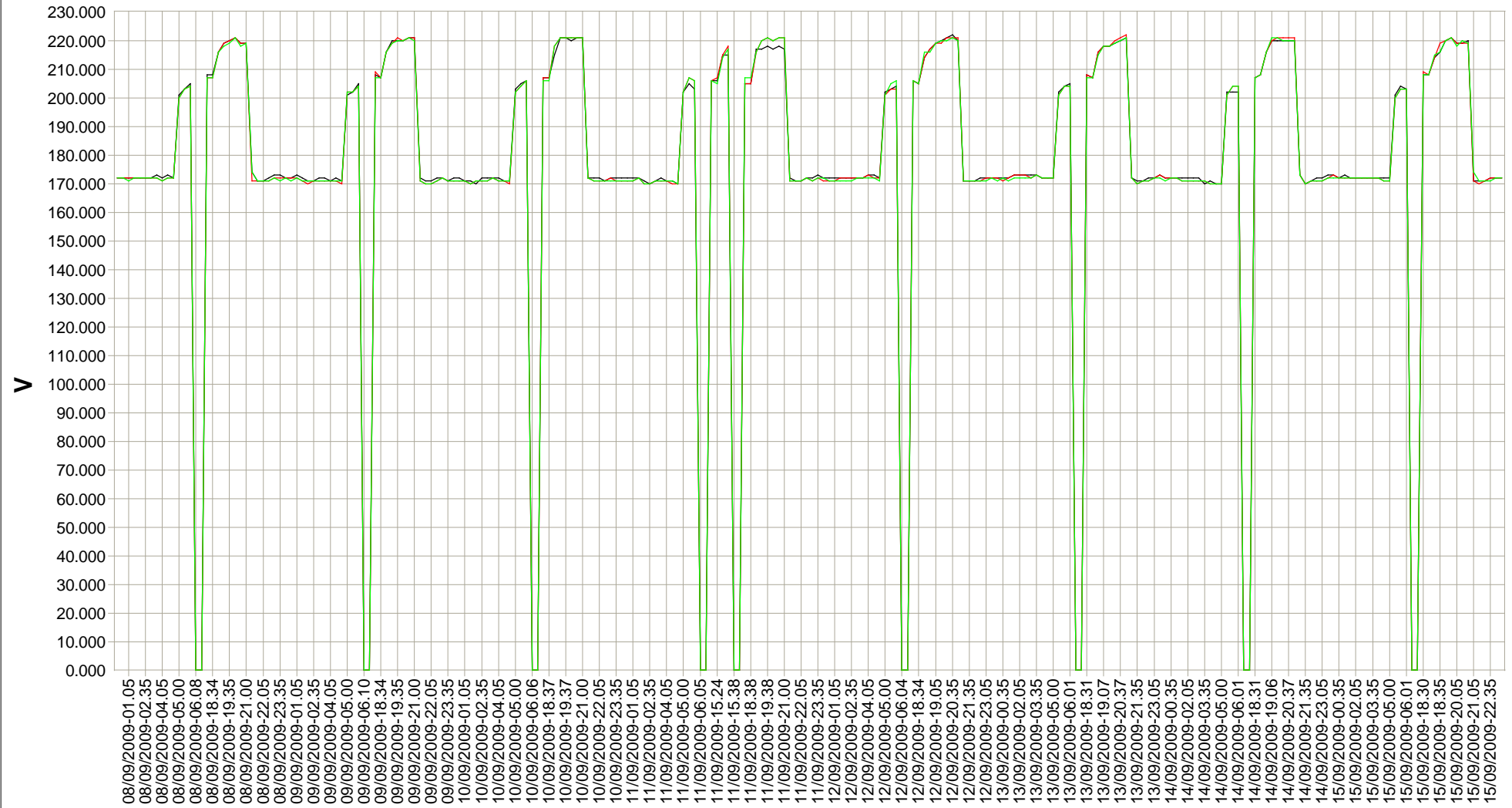
Tension Aval R	0.000	209.000	208.000	214.000	217.000	0.000	0.000	208.000	208.000	216.000
Tension Aval S	0.000	208.000	208.000	214.000	217.000	0.000	0.000	208.000	207.000	216.000
Tension Aval T	0.000	208.000	207.000	216.000	216.000	0.000	0.000	208.000	207.000	216.000

— Tension Aval R

— Tension Aval S

— Tension Aval T

Armoire 5770 Tension Aval R S T 08/09/2009 - 15/09/2009



	08/09/2009-00.05	08/09/2009-00.35	08/09/2009-01.05	08/09/2009-01.35	08/09/2009-02.05	08/09/2009-02.35	08/09/2009-03.05	08/09/2009-03.35	08/09/2009-04.05	08/09/2009-04.36
Tension Aval R	172.000	172.000	172.000	172.000	172.000	172.000	172.000	173.000	172.000	173.000
Tension Aval S	172.000	172.000	172.000	172.000	172.000	172.000	172.000	172.000	171.000	172.000
Tension Aval T	172.000	172.000	171.000	172.000	172.000	172.000	172.000	172.000	171.000	172.000

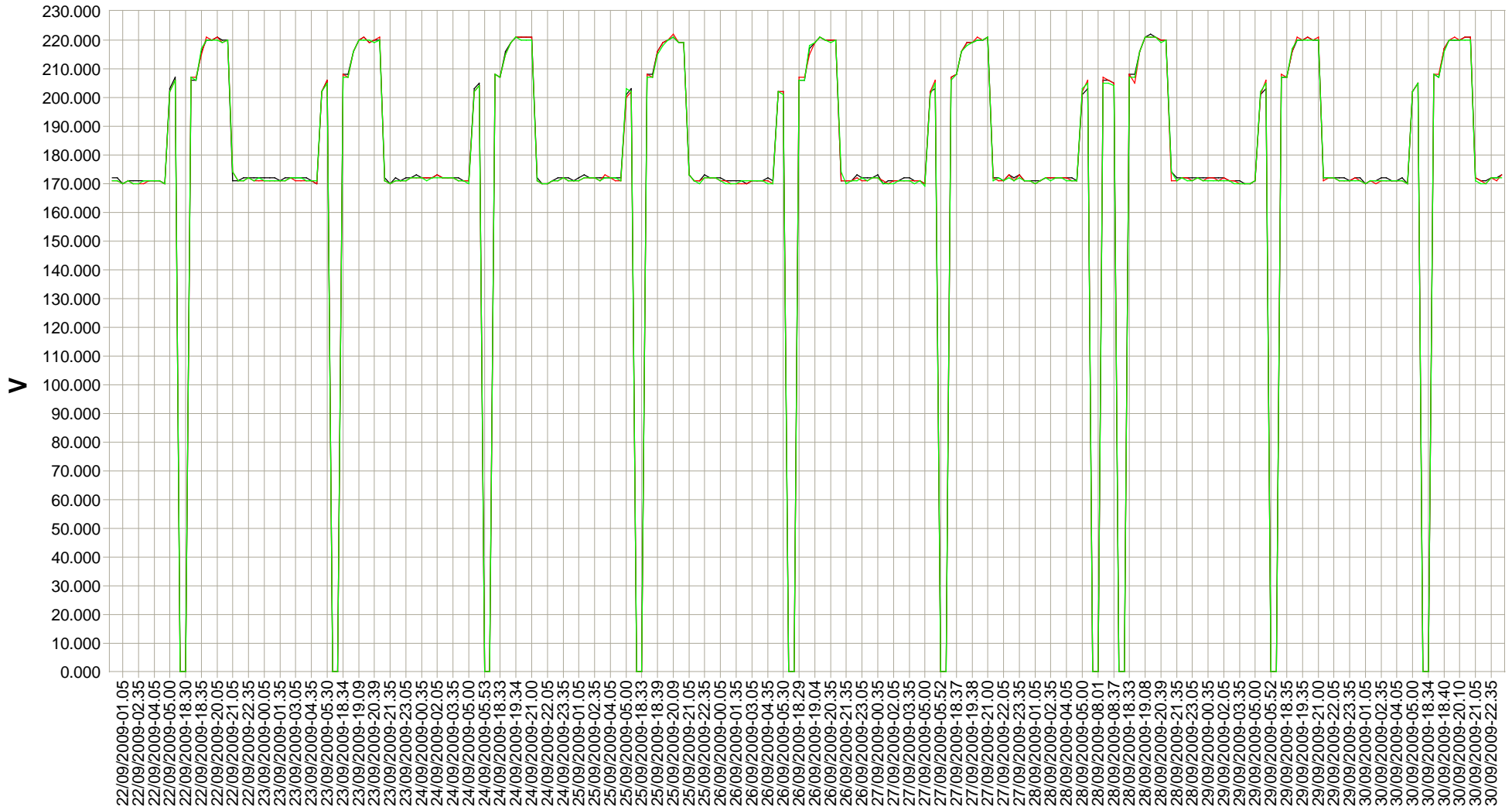
Tension Aval R	172.000	172.000	172.000	172.000	172.000	172.000	172.000	173.000	172.000	173.000
Tension Aval S	172.000	172.000	172.000	172.000	172.000	172.000	172.000	172.000	171.000	172.000
Tension Aval T	172.000	172.000	171.000	172.000	172.000	172.000	172.000	172.000	171.000	172.000

— Tension Aval R

— Tension Aval S

— Tension Aval T

Armoire 5770 Tension Aval R S T 22/09/2009 - 30/09/2009



	22/09/2009-00.05	22/09/2009-00.35	22/09/2009-01.05	22/09/2009-01.35	22/09/2009-02.05	22/09/2009-02.35	22/09/2009-03.05	22/09/2009-03.35	22/09/2009-04.05	22/09/2009-04.35
Tension Aval R	172.000	172.000	170.000	171.000	171.000	171.000	171.000	171.000	171.000	171.000
Tension Aval S	171.000	171.000	170.000	171.000	170.000	170.000	170.000	170.000	171.000	171.000
Tension Aval T	171.000	171.000	170.000	171.000	170.000	170.000	171.000	171.000	171.000	171.000

Tension Aval R

172.000

172.000

170.000

171.000

171.000

171.000

171.000

171.000

171.000

171.000

Tension Aval S

171.000

171.000

170.000

171.000

170.000

170.000

170.000

170.000

171.000

171.000

Tension Aval T

171.000

171.000

170.000

171.000

170.000

170.000

171.000

171.000

171.000

171.000